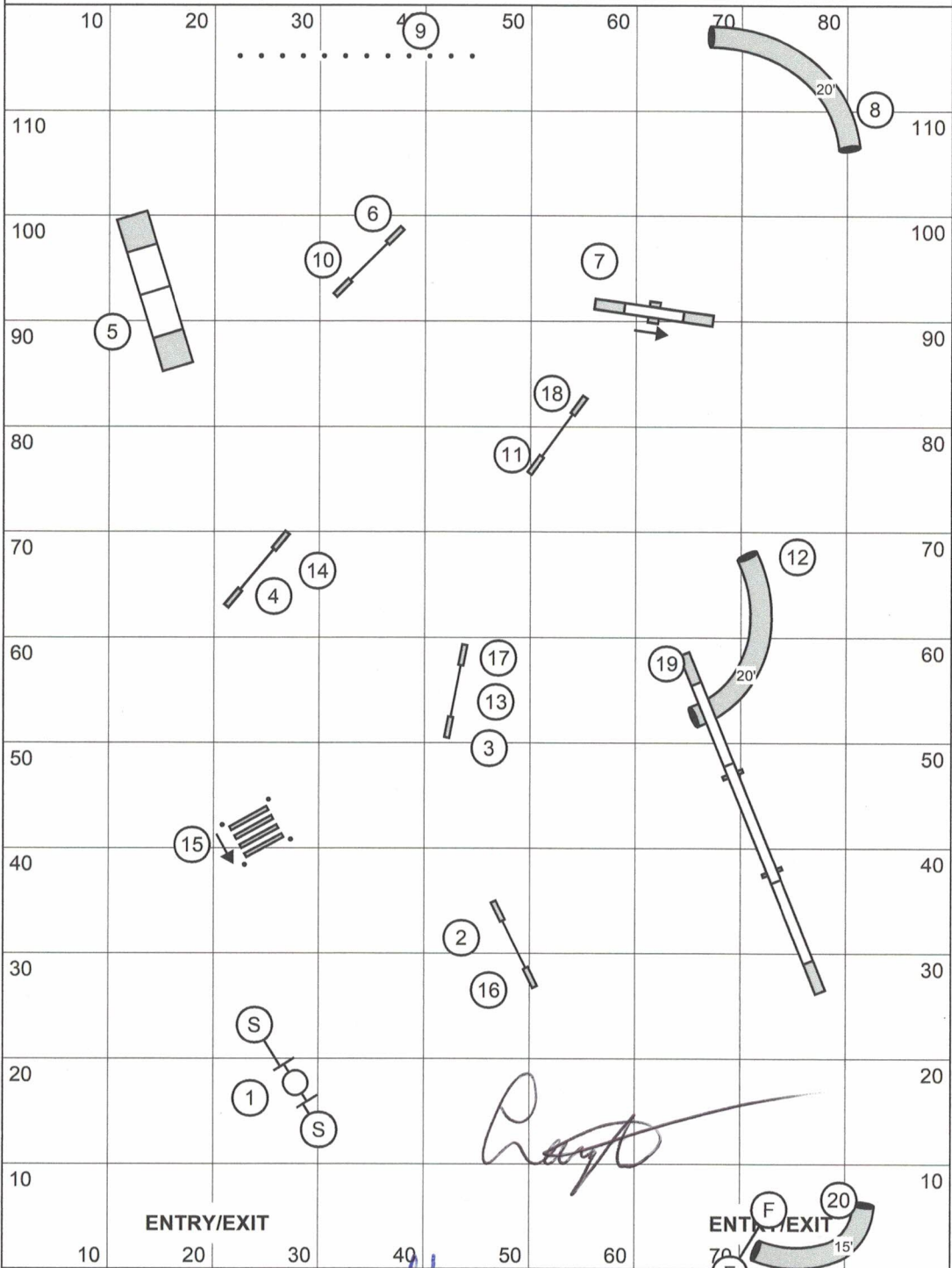


CHAMPIONNAT PROVINCIAL / REGIONAL CHAMPIONSHIPS
STANDARD #2

Designing Judge: Tracey Mallinson

Judged by: _____



Estimated 20" path: 195 - 200 yds

Open: 3.0 - 3.5 yps / Med : 2.8 - 3.0 yps

ACTUAL: (_____ ' + 36' + 18' + 12') / 3 = 220 yds

Open Reg/Spec (3.15 yps) = 70 s
24"/20"R & 20"/16"S

Open Vet (Open + 20%) = 84 s
20"/16" SDV & 16"/12" DDV

Medium Reg/Spec (2.85 yps) = 77 s
16"/12"R & 12"/8"S

Medium Vet (Medium + 20%) = 92 s
12"/8" SDV & 8"/4" DDV

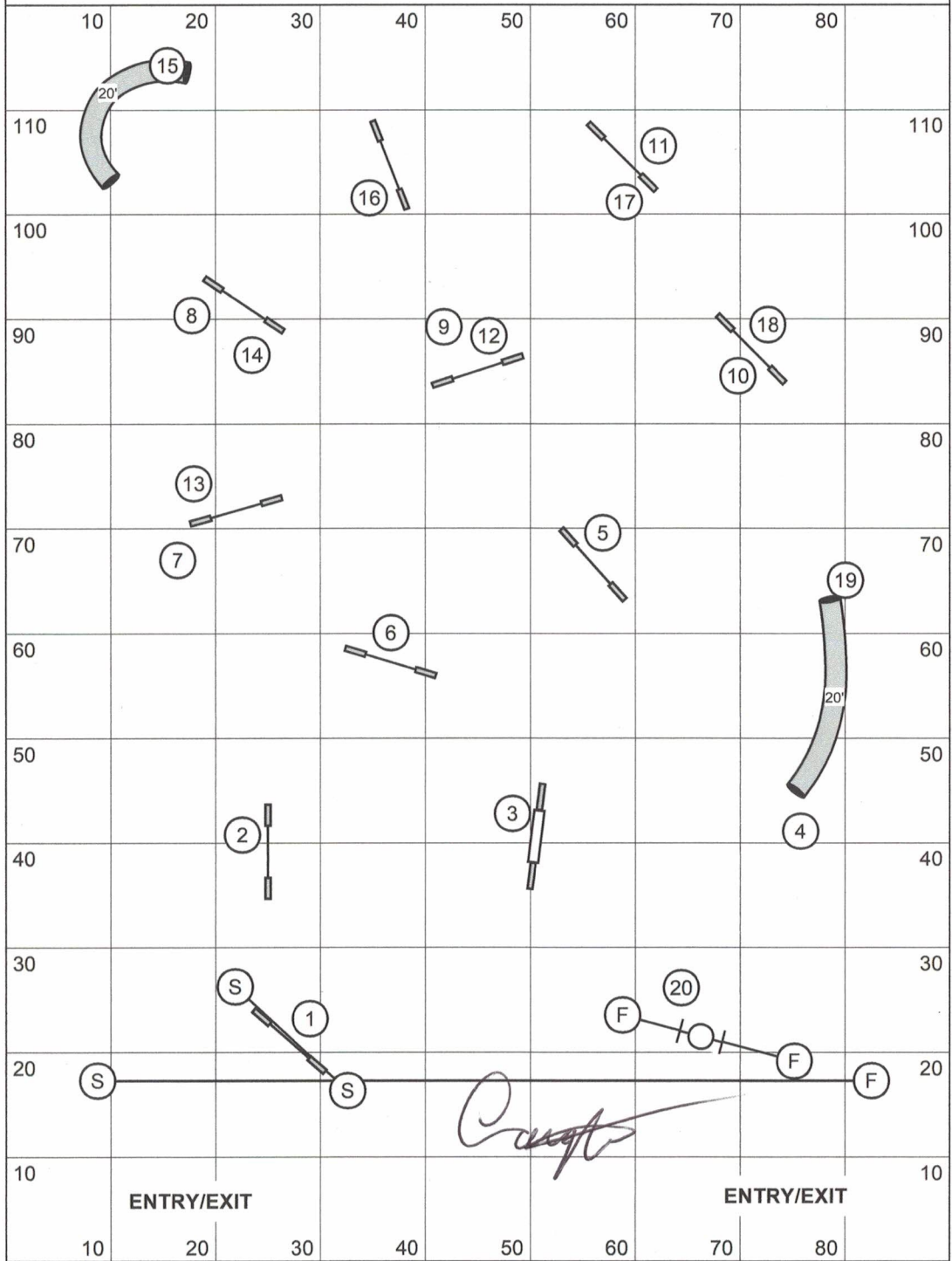
Mini Reg/Spec (2.85 + 5s) = 82 s
8"R & 4"S

Mini Vet (Mini + 20%) = 98 s
4" SDV

REGIONAL CHAMPIONSHIPS - JUMPERS #2
CHAMPIONNAT PROVINCIAL - SAUTEUR

Designing Judge: Marie-Noelle Côté

Judged by: _____



59177

Estimated 20" path: 168 yds

Open YPS: 3.9 - 4.3

Med YPS: 3.5 - 3.9

Actual: 591 / 3 = 197 yds

Open Reg/Spec (4.1 yps) = 48 s
 24"/20"R & 20"/16"S

Open Vet (Open + 20%) = 58 s
 20"/16" SDV & 16"/12" DDV

Medium Reg/Spec (3.7 yps) = 53 s
 16"/12"R & 12"/8"S

Medium Vet (Med + 20%) = 64 s
 12"/8" SDV & 8"/4" DDV

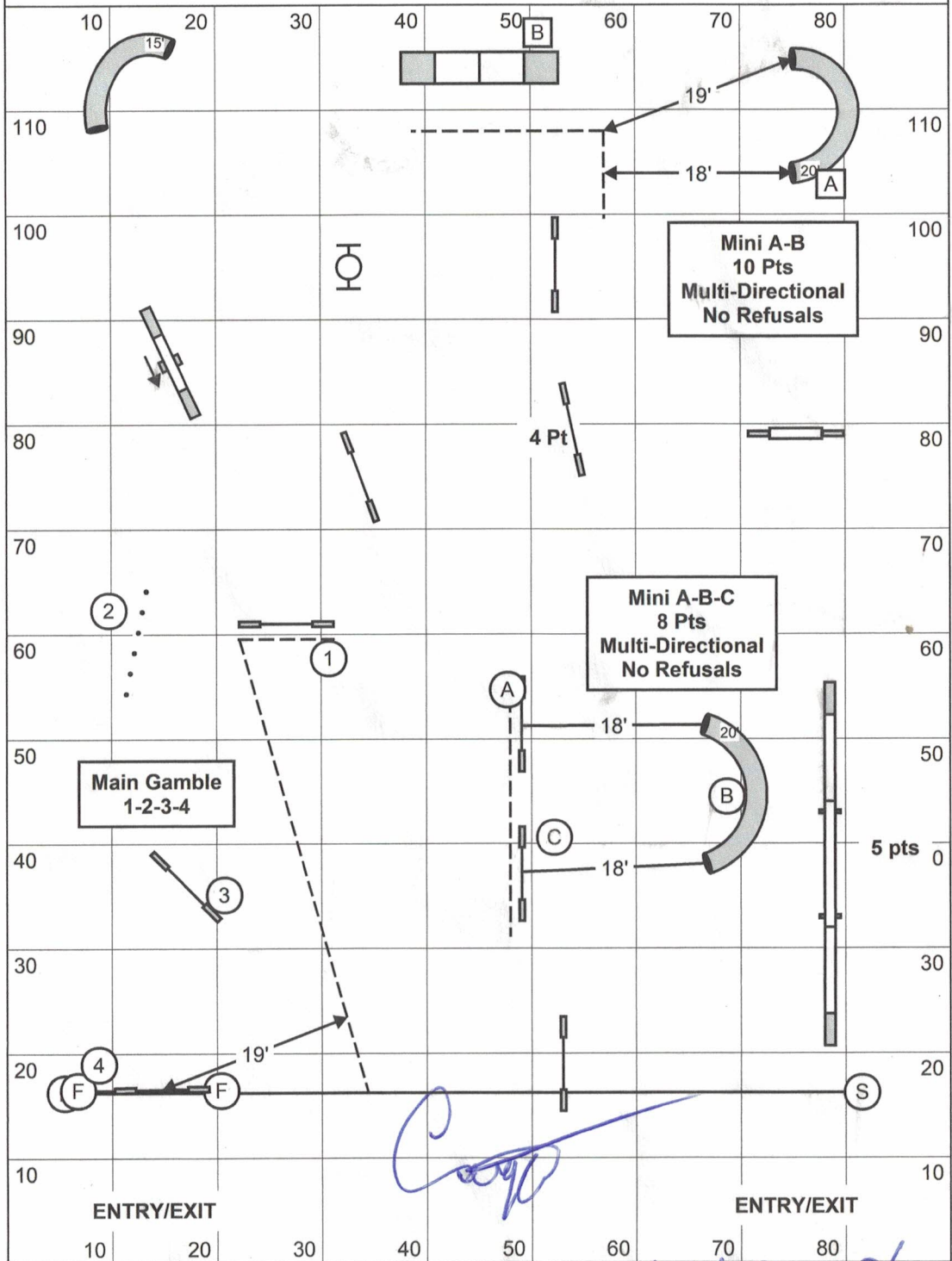
Mini Reg/Spec (3.7 yps + 5s) = 58 s
 8"R & 4"S

Mini Vet (Mini + 20%) = 70 s
 4" SDV

REGIONAL CHAMPIONSHIPS - GAMBLERS #2
 CHAMPIONNAT PROVINCIAL - ENJEU

Designing Judge: Craig Peters

Judged by: _____



OPENING SCT: 40 sec

Wet Grass. Changed times.

Open Reg/Spec GT : ~~18~~ s *20*
 24"/20"R & 20"/16"S

Open Vet GT (Open + 20%): ~~22~~ s *24*
 20"/16" SDV & 16"/12" DDV

Medium Reg/Spec GT (Open + 10%): ~~20~~ s *22*
 16"/12"R & 12"/8"S

Medium Vet GT (Med + 20%): ~~24~~ s *26*
 12"/8" SDV & 8"/4" DDV

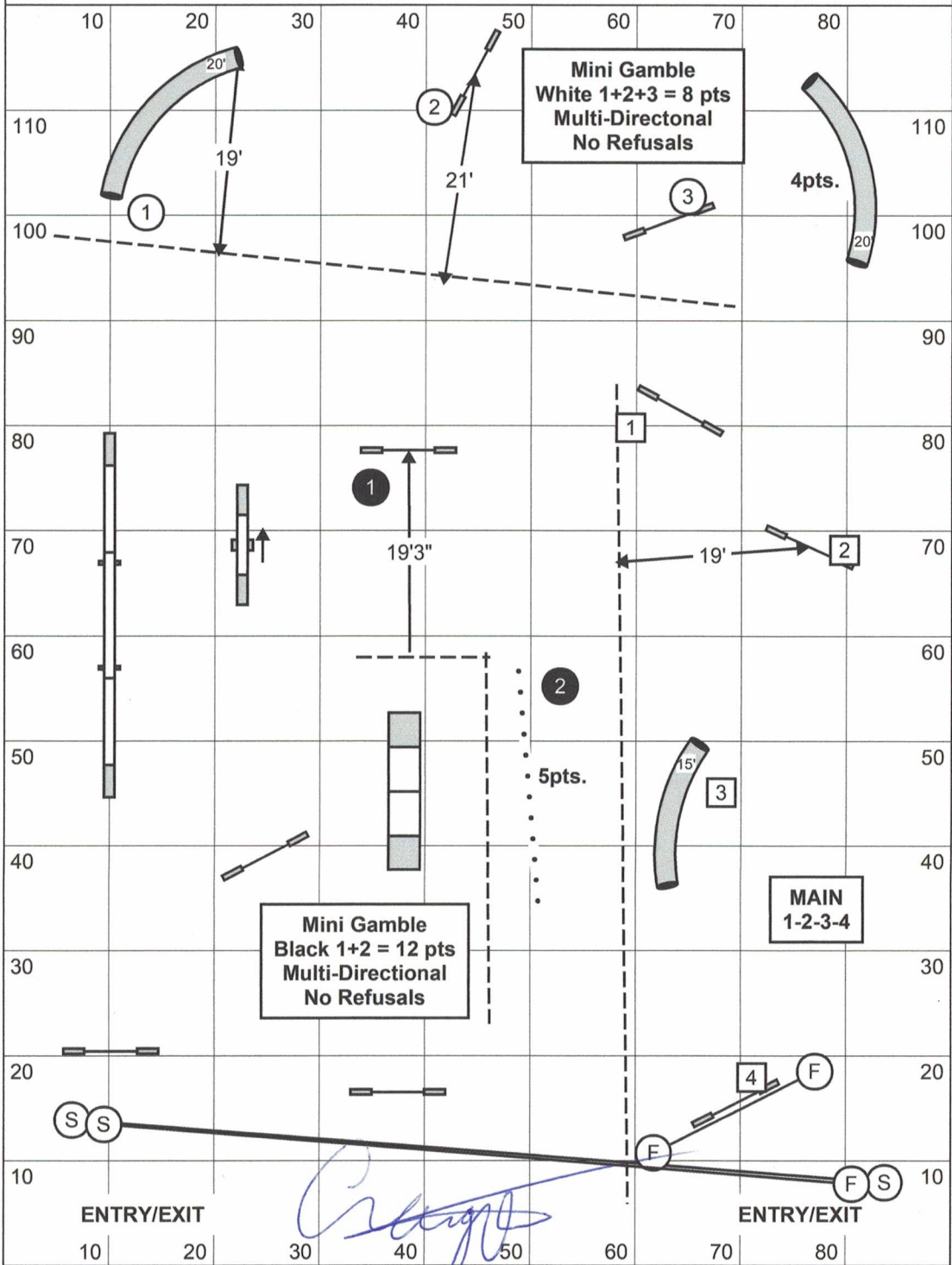
Mini Reg/Spec GT (Open + 20%): ~~22~~ s *24*
 8"R & 4"S

Mini Vet GT (Mini + 20%): ~~26~~ s *29*
 4" SDV

REGIONAL CHAMPIONSHIPS - GAMBLERS #1
CHAMPIONNAT PROVINCIAL - ENJEU

Designing Judge: Angela Koop

Judged by: _____



OPENING SCT: 40 sec

Open Reg/Spec GT : 18 s
 24"/20"R & 20"/16"S

Open Vet GT (Open + 20%): 22 s
 20"/16" SDV & 16"/12" DDV

Medium Reg/Spec GT (Open + 10%): 20 s
 16"/12"R & 12"/8"S

Medium Vet GT (Med + 20%): 24 s
 12"/8" SDV & 8"/4" DDV

Mini Reg/Spec GT (Open + 20%): 22 s
 8"R & 4"S

Mini Vet GT (Mini + 20%): 26 s
 4" SDV